

DANTE - GOODS AND BADS
PROUDLY PRESENTS

THE STARS LOOK DIFFERENT TODAY



CHRISTOPHE DE LA
FONTAINE

STEFAN DIEZ

RAQUEL PACCHINI

JAKUB ZAK

ANDREA STEIDL

PIETRO RUSSO

AYLIN LANGREUTER

CHARLES SCHUMANN



THE STARS LOOK DIFFERENT TODAY

AS HUMANS WE CRAVE CHANGE. WE FOREVER WANT NEW HORIZONS,
NEW BEGINNINGS, TO BOLDLY GO WHERE NO MAN HAS GONE BEFORE.
BUT AT THE SAME TIME WE ARE ALSO INSTINCTIVELY CAREFUL ABOUT
TO MUCH ALTERATION. BECAUSE JUST AS MUCH, WE NEED THE COMFORT
OF FAMILIARITY, THE ATTACHMENT TO THE THINGS WE GREW TO LOVE.
SO THAT WE DO IS THIS: WE REDRESS, REFINISH, REARRANGE.

CHAIR TO WINDOW, TABLE FROM THE CORNER TO THE MIDDLE, SHELF
FROM THIS WALL TO THAT WALL. KEEP THE FAMILIAR, BUT ADD A NEW TWIST.

AND SOMEHOW, MAGICALLY, THIS MAKES US FEEL BETTER. FREER. NEWER.

THE STARS LOOK DIFFERENT TODAY IS THE THEME OF DANTE'S 2019/20
COLLECTION: A NEW SPARKLE FROM AN OLD STAR, COMFORTING, BUT
ALSO PROMISING OF SOMETHING NEW.

THE THIRD

DESIGNED BY
CHRISTOPHE DE LA FONTAINE

TPOLOGY BAR STOOL

DIMENSIONS HIGH 42<sup>CENTI
METER</sup> X 44<sup>CENTI
METER</sup> X 75<sup>CENTI
METER</sup> LOW 42<sup>CENTI
METER</sup> X 44<sup>CENTI
METER</sup> X 65<sup>CENTI
METER</sup>

MATERIAL SOLID AND PLYWOOD / BEECH NATURAL AND STAINED METALRING







DESIGNED BY GARTH ROBERTS

MYSELF & I

TPOLOGY DESK

DIMENSIONS 125^{CENTI}_{METER} X 57^{CENTI}_{METER} X 80^{CENTI}_{METER}

MATERIAL POWDER-COATED STEEL BASE / ALUMINUM TOP IN LEATHER



DESIGNED BY
CHRISTOPHE DE LA FONTAINE
CHARLOTTE



TYPOLGY CHAISE LOUNGE DIMENSIONS 145^{CENTI}_{METER} X 50^{CENTI}_{METER} X 95^{CENTI}_{METER}
MATERIAL POWDER-COATED OR ANNOIDIZED ALUMINUM / LEATHER SEAT AND MATRASS



DESIGNED BY STEFAN DIEZ
FALSTAFF



TPOLOGY ARMCHAIR
DIMENSIONS 70 CENTI
METER X 60 CENTI
METER X 75 CENTI
METER
MATERIAL POWDER-COATED STEEL BASE / LEATHER SEAT



DESIGNED BY RAQUEL PACCHINI
BELLE ETAGE

TPOLOGY CARPET DIMENSIONS 320^{CENTI}_{METER} X 160^{CENTI}_{METER} MATERIAL / TUFTED WOOL



DESIGNED
BY
CHRISTOPHE DE LA FONTAINE
H.E.A. 310

TYPOLGY STOOL
DIMENSIONS 50 CENTI
METER X 28 CENTI
METER X 42 CENTI
METER
MATERIAL POWDER-COATED T-BEAM / UPHOLSTERED LEATHER SEAT







DESIGNED BY CHRISTOPHE DE LA FONTAINE
MINIMA MORALIA

TPOLOGY ROOM DIVIDER

DIMENSIONS 80 CENTI
METER X 20 CENTI
METER X 180 CENTI
METER

MATERIAL POWDER-COATED STEEL BASE / PLEATED FABRIC

DESIGNED
BY CHRISTOPHE DE LA FONTAINE

LITTLE ODD

TPOLOGY CHEST

DIMENSIONS 42<sup>CENTI
METER</sup> X 28<sup>CENTI
METER</sup> X 28<sup>CENTI
METER</sup>

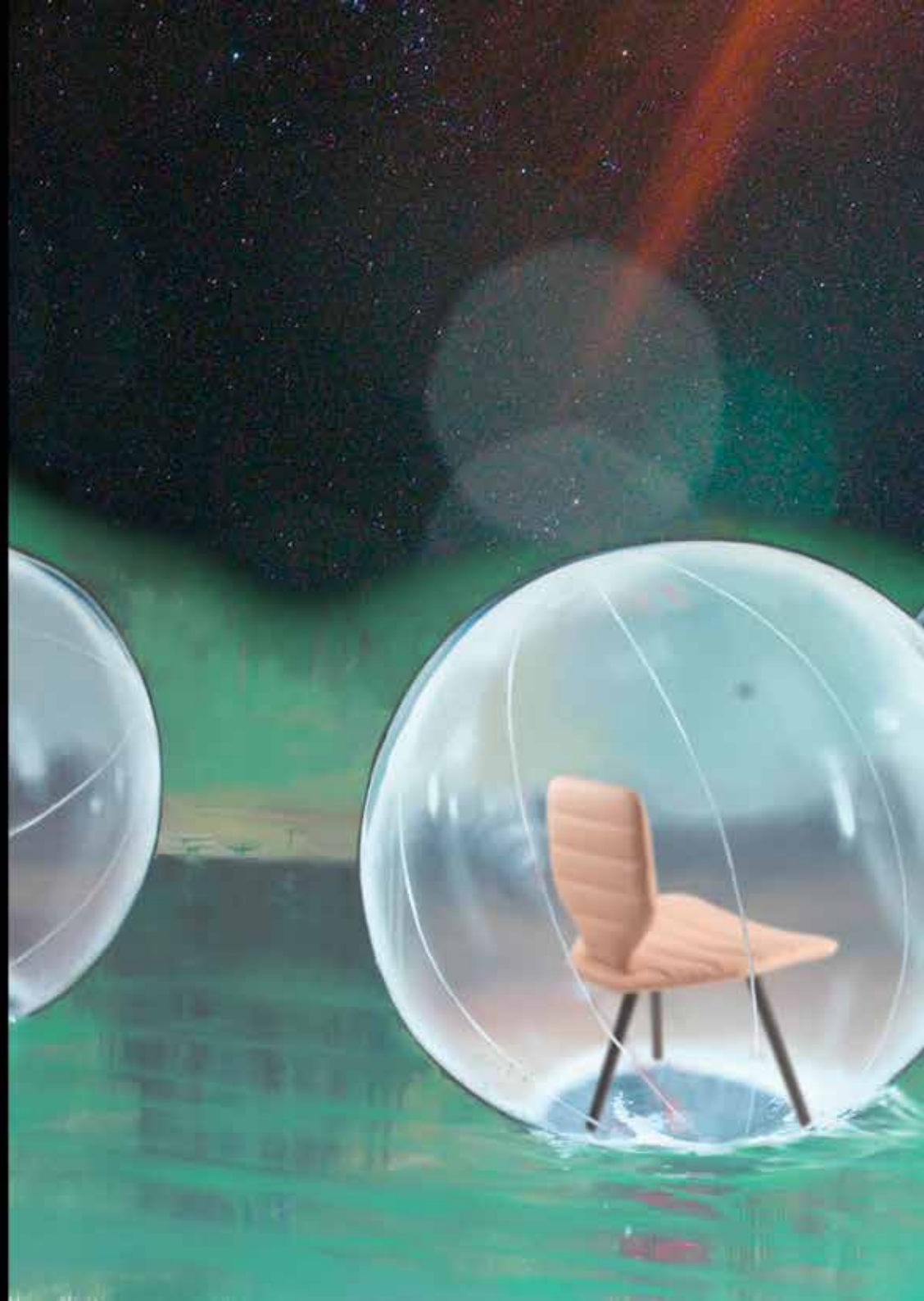
MATERIAL POWDER-COATED ALUMINUM



DESIGNED BY CHRISTOPHE DE LA FONTAINE

BAVARESK LOW

TPOLOGY LOW CHAIR DIMENSIONS 62 CENTI
METER X 54 CENTI
METER X 38 CENTI
METER MATERIAL BEECH / UPHOLSTERED LEATHER





DESIGNED
BY
CHRISTOPHE DE LA FONTAINE
BAVARESK HIGH

TPOLOGY DINING CHAIR
DIMENSIONS 50 CENTI
METER X 48 CENTI
METER X 45 / 94 CENTI
METER
MATERIAL BEECH / UPHOLSTERED LEATHER

DESIGNED BY CHRISTOPHE DE LA FONTAINE
BAVARESK ROUND



TPOLOGY DINING TABLE DIMENSIONS H 72 CENTIMETER MATERIAL TOP MARBLE OR GLASS / LEGS BEECH IN VARIOUS FINISHES

DESIGNED
BY
CHARLES SCHUMANN
ESTABLISHED

TPOLOGY MUG DIMENSIONS D 80 11 CENTI
METER X 10 CENTI
METER 300 ML MATERIAL POLISHED COPPER





DESIGNED BY CHRISTOPHE DE LA FONTAINE
COME AS YOU ARE

TPOLOGY BAR CART

DIMENSIONS 80^{CENTI}_{METER} X 40^{CENTI}_{METER} X 80^{CENTI}_{METER}

MATERIAL POWDER-COATED STEEL / TEMPERED GLASS



DESIGNED BY ANDREA STEIDL

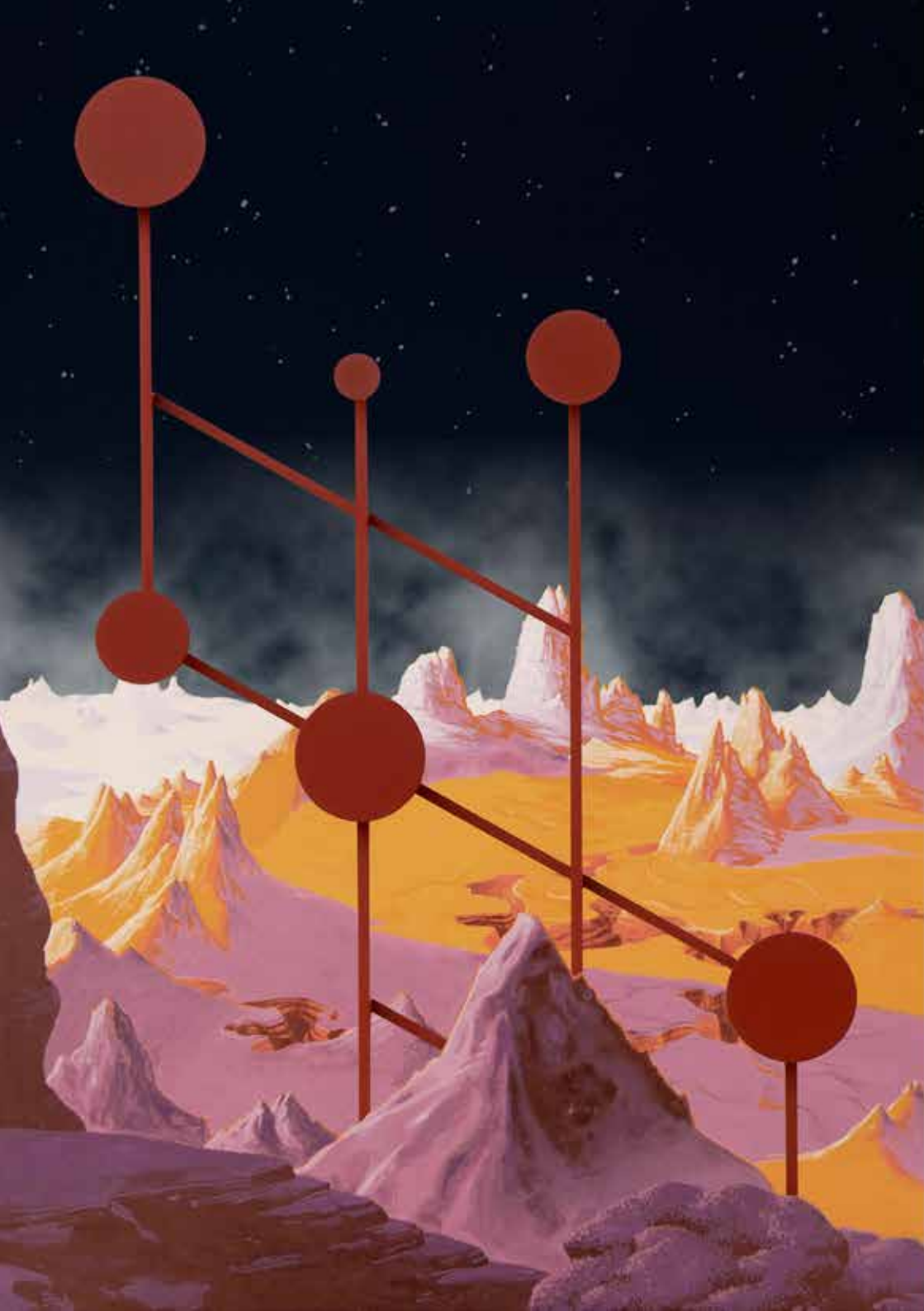
REVUE

TYPOLGY SIDE TABLE

DIMENSIONS 42<sup>CENTI
METER</sup> X 35<sup>CENTI
METER</sup> X 47/50<sup>CENTI
METER</sup>

MATERIAL POWDER-COATED STEEL
LACQUERED OR UPHOLSTERED WITH LEATHER





DESIGNED BY ANDREA STEIDL

MEMOIR

TPOLOGY COAT RACK

DIMENSIONS 100^{CENTI}_{METER} X 100^{CENTI}_{METER} X 756^{CENTI}_{METER}

MATERIAL POWDER-COATED AND ANNOIDIZED ALUMINUM

DESIGNED BY PIETRO RUSSO

SCINTILLA

TYPOLGY TABLE LAMP

DIMENSIONS 14^{CENTI}_{METER} X 16^{CENTI}_{METER} X 56^{CENTI}_{METER}

MATERIAL BOROSILICATE GLASS / METAL BASE / LED





DESIGNED BY CHRIATOPHE DE LA FONTAINE
NIGHTINGALE

TPOLOGY LANTERN

DIMENSIONS SMALL 21<sup>CENTI
METER</sup> X 12<sup>CENTI
METER</sup> X 30<sup>CENTI
METER</sup>
LARGE 35<sup>CENTI
METER</sup> X 15<sup>CENTI
METER</sup> X 47<sup>CENTI
METER</sup>

MATERIAL PORCELAIN / LEATHER BELT / GX 53 LED



DESIGNED BY AYLIN LANGREUTER

AUDIENCE

TYPOLGY ANTENNA

DIMENSIONS 20 CENTIMETER X 15 CENTIMETER X / H VARIABLE

MATERIAL POLISHED STAINLESS STEEL



DANTE - GOODS AND BADS GMBH / HAGGN 24 / 94362 NEUKIRCHEN GERMANY
WWW.DANTE.LU INFO @ DANTE.LU FACEBOOK.COM / DANTEGOODSANDBADS
INSTAGRAM.COM / DANTEGOODSANDBADS

