



**a
Ten
with
Cherry
on
Top**

**Catalogue 2022/23
by Dante - Goods and Bads**

Yes, it's Dante-Goods and Bads' 10-year anniversary this year and we are officially not a budding little flower anymore. Instead, we have grown into something cautiously solid, rooted, yet delicate.

In this past decade we also weathered many a storm so this is an occasion where celebrations would be in order. Festivities. Lavish parties that won't wait until tomorrow. Retrospection, also, on the things we achieved with Dante: the Goods, the Bads, never the ugly.

In our Anniversary Collection "a 10 with Cherry on Top" we did a little of a lot: celebration, homage, reinvention, variation and even some metamorphosis. But most of all: we threw ourselves that party! Flavored it with a hint of Busby Berkeley, served up some fancy hors d'œuvres and that soft hissing sound you hear is us, discretely pouring champagne behind the curtain. So welcome! Come in, have a sip, take a bite, marvel at the abundance of elegant new finishes for our most popular designs, as well as limited celebratory editions of a select few.

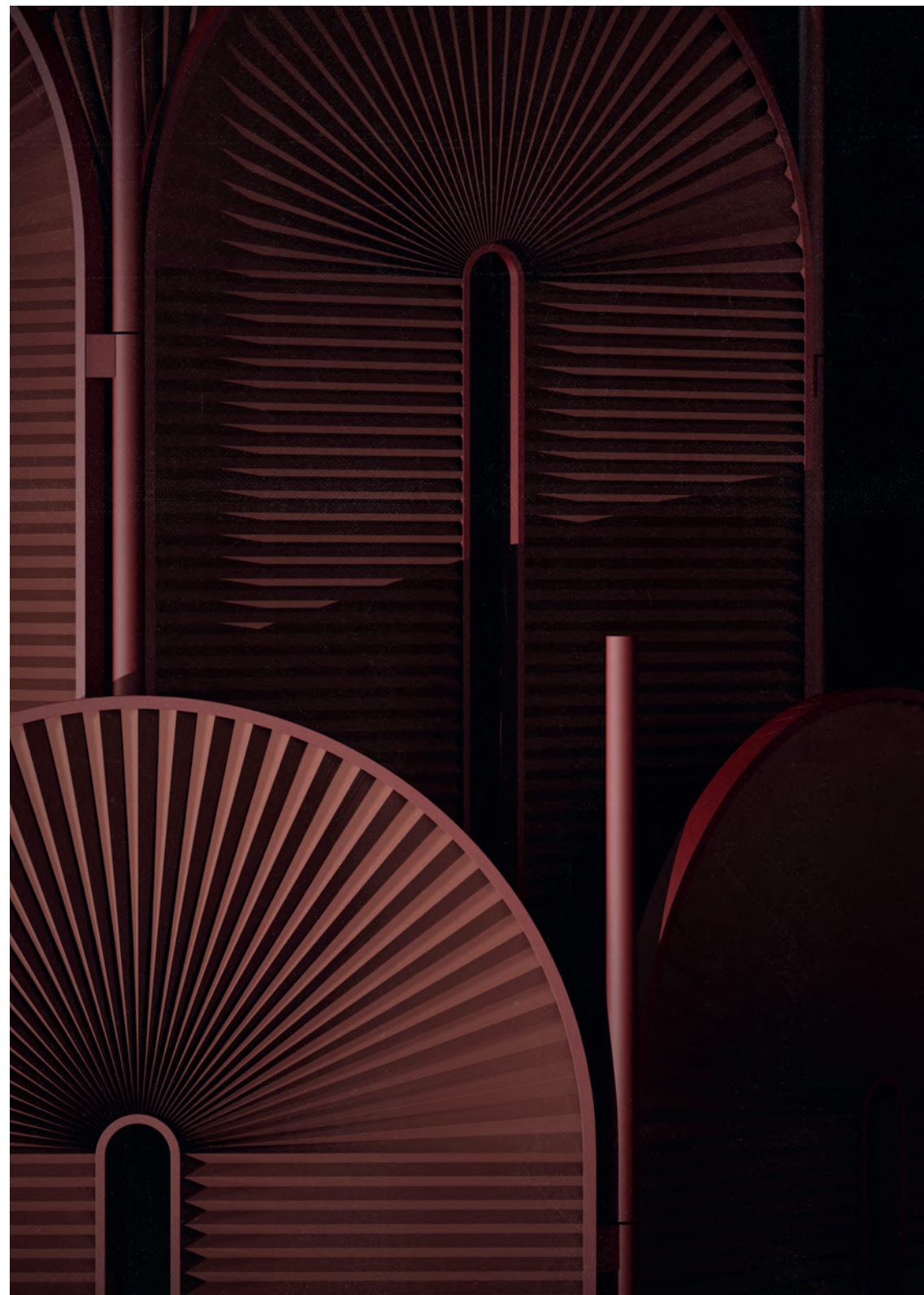
Traditionally, intermittently, our collections have included a Bad: an obscure item of questionable nature, we sneak in there for fun, for balance, for provocation even. In this spirit, this years' Bad will be a non-fungible token: a completely useless digital product everybody has heard of, most only barely understand and no one at all needs. As a Bad it's perfect. It's the cherry on top.

And that's it, friends!

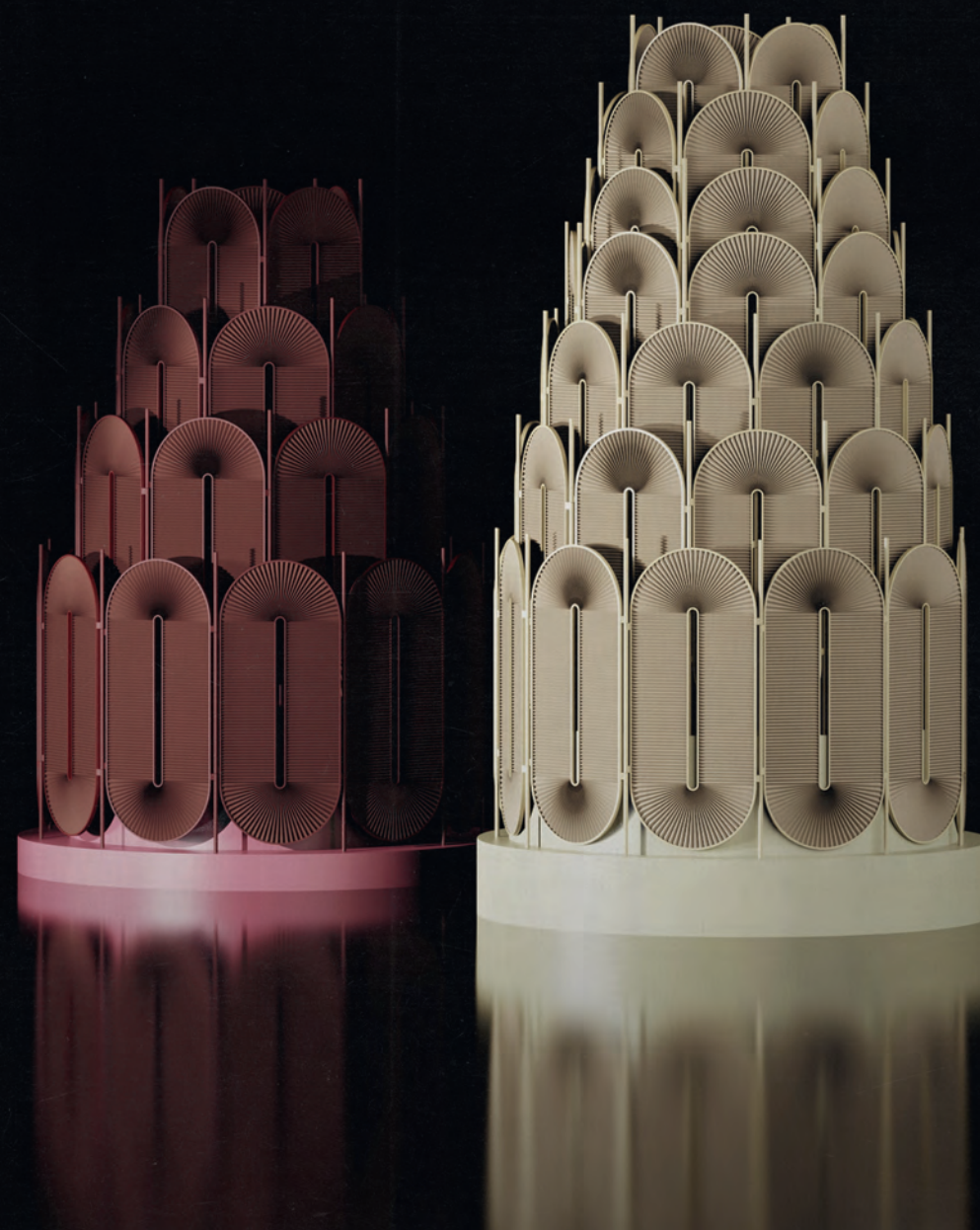
Now let's all together drink to what has been and what's to come.

Minima Moralia

Room Divider
by Christophe de la Fontaine









INGREDIENTS: POWDER-COATED ALUMINUM IN CHAMPAGNE METALLIC, PLEATED FABRIC IN CHAMPAGNE METALLIC /
POWDER-COATED ALUMINUM IN BORDEAUX, PLEATED FABRIC IN BORDEAUX / POWDER-COATED ALUMINUM IN
BLACK, PLEATED FABRIC IN ANTHRACITE / POWDER-COATED ALUMINUM IN WHITE, PLEATED FABRIC IN WHITE



Babel

Book Carousel
by Christophe de la Fontaine







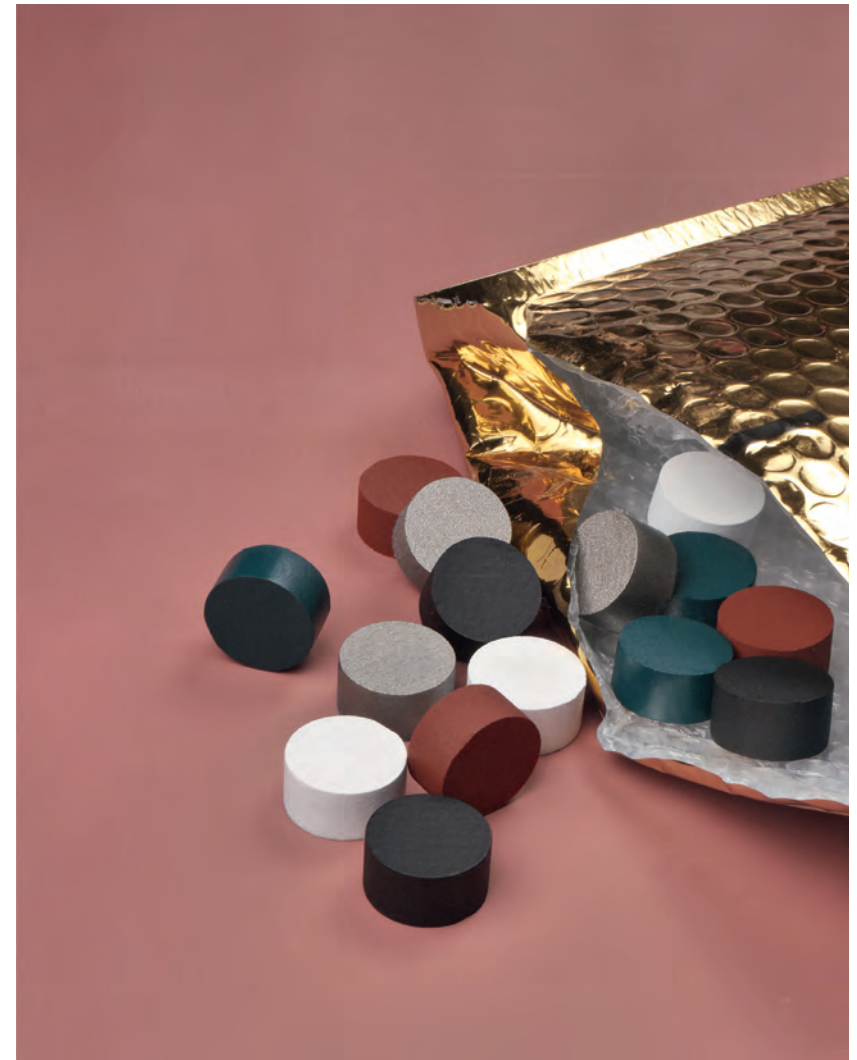
INGREDIENTS: POWDER-COATED STEEL IN WHITE, NATURAL STAINED BEECH / POWDER-COATED STEEL IN BORDEAUX, STAINED BEECH IN FRAMBOISE / POWDER -COATED STEEL IN BLACK, STAINED BEECH IN BLACK

Rayons

Side Table
by Christophe de la Fontaine







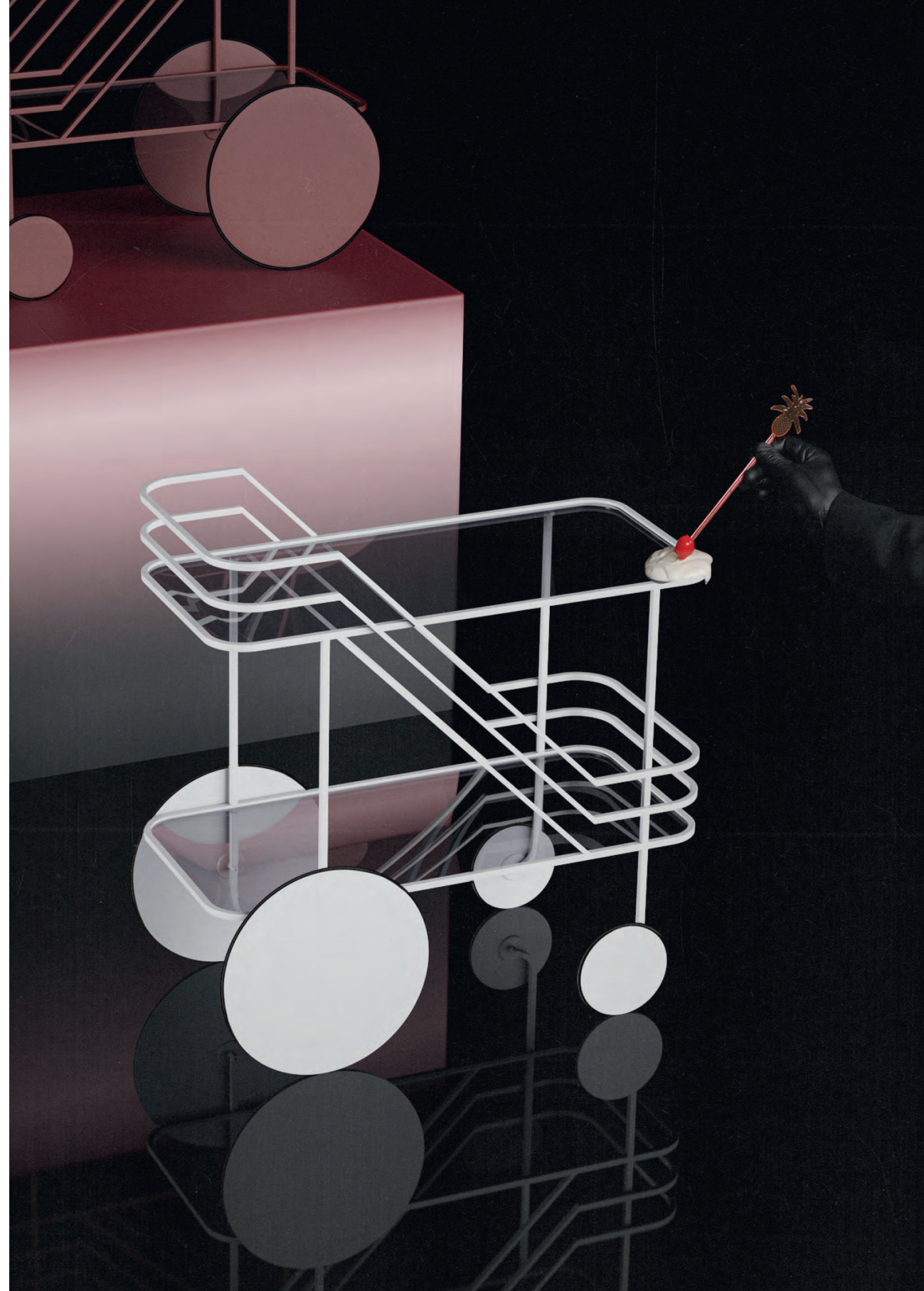
INGREDIENTS: POWDER-COATED STEEL IN BLACK / POWDER-COATED STEEL IN CHAMPAGNE METALLIC / POWDER
COATED STEEL IN WHITE / POWDER-COATED STEEL IN BORDEAUX / POWDER-COATED STEEL IN BLUE GREEN METALLIC



Come as you are

Bar Cart
by Christophe de la Fontaine







INGREDIENTS: POWDER-COATED STEEL IN BLACK, TEMPERED GLASS FUMEE / POWDER-COATED STEEL IN CHAMPAGNE METALLIC, TEMPERED GLASS FUMEE / POWDER-COATED STEEL IN WHITE, TEMPERED GLASS FUMEE / POWDER-COATED STEEL IN BORDEAUX, TEMPERED GLASS FUMEE

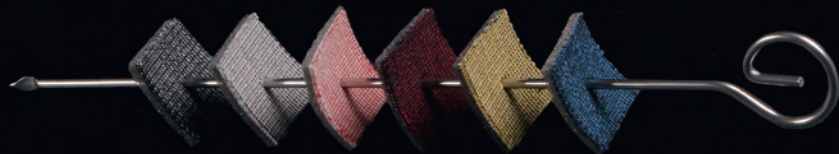


Serpentine

Couch
by Christophe de la Fontaine







INGREDIENTS: VELVET IN OCEAN BLUE, SUNFLOWER, BLACKBERRY, LILAC, PISTACCHIO,
LIGHT BLUE, CREME / BOUCLE IN DARK GREY, CUCUMBER, SAGE, CREME, WHITE /
UNI MELANGE IN DARK GREY, GREY, RASBERRY, BLACKBERRY, LEMON, BLUE

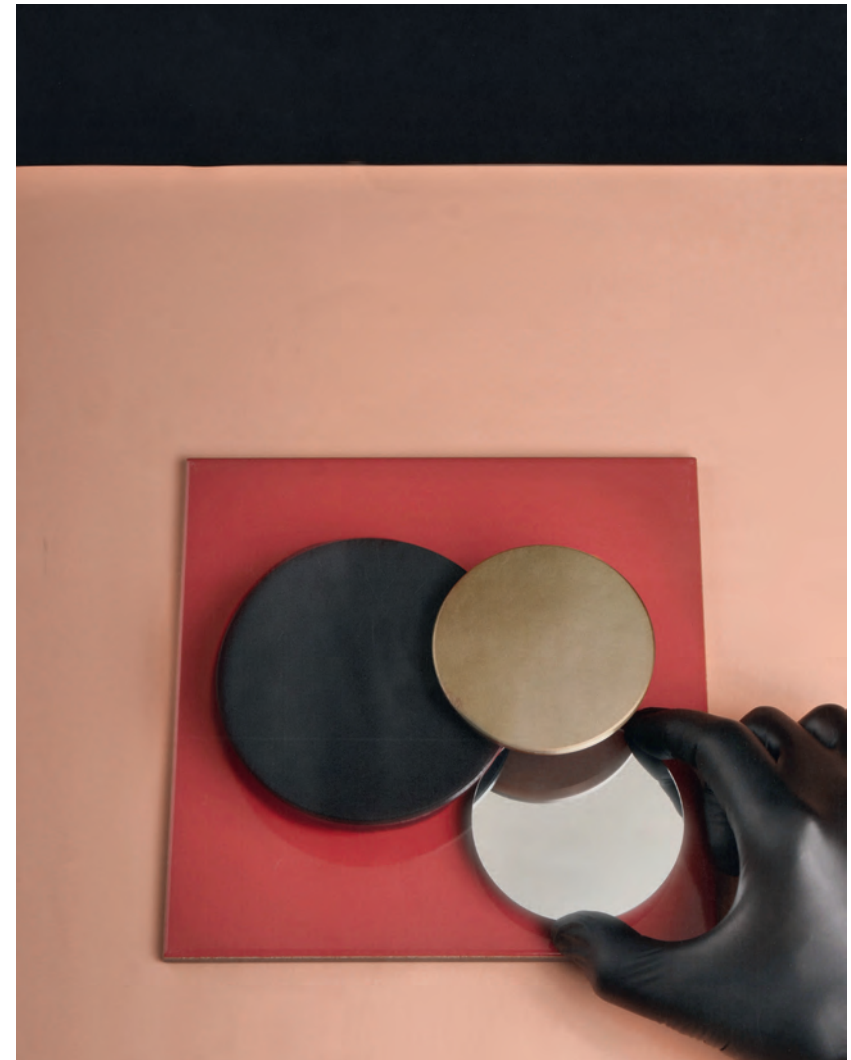


INGREDIENTS: LEATHER IN BORDEAUX, OLIVE, SAGE, NUDE, CREME / VEGAN FUR
TEDDY IN MOSS GREEN, CURRY, ROSE, GREY, WHITE / VEGAN FUR CURLY IN
GREY, BLUEGREEN, ROSE, CREME, WHITE



Wonderland

Mirror
by Christophe de la Fontaine



INGREDIENTS: POWDER-COATED STEEL IN BLACK, POWDER-COATED STEEL IN CHAMPAGNE METALLIC, MIRROR

The Third

Bar Stool
by Christophe de la Fontaine







INGREDIENTS: NATURAL STAINED PLYWOOD, SATINATED BRASS / STAINED PLYWOOD IN BLACK, BURNISHED BRASS



Revue

Side Table
by Andrea Steidl

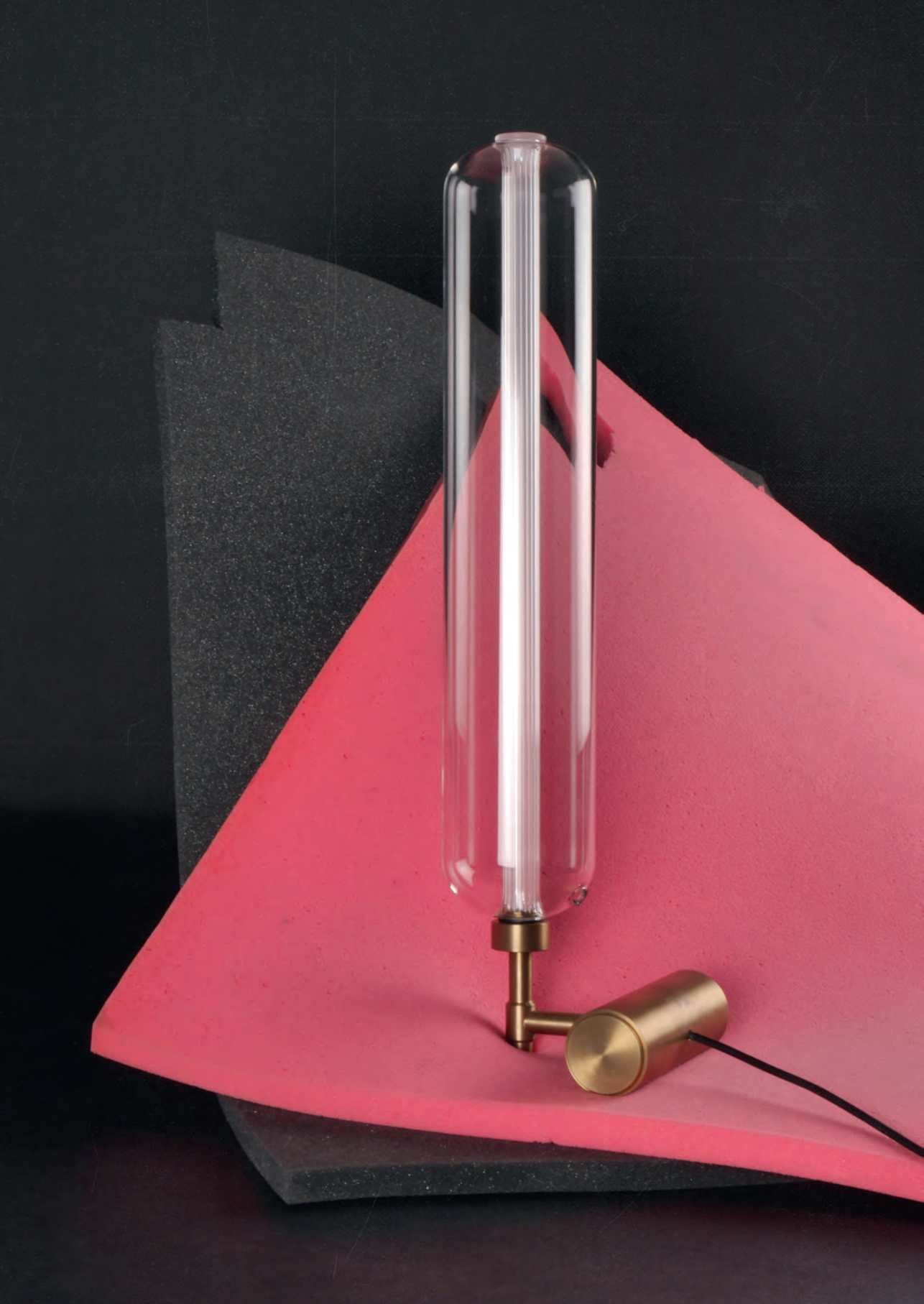




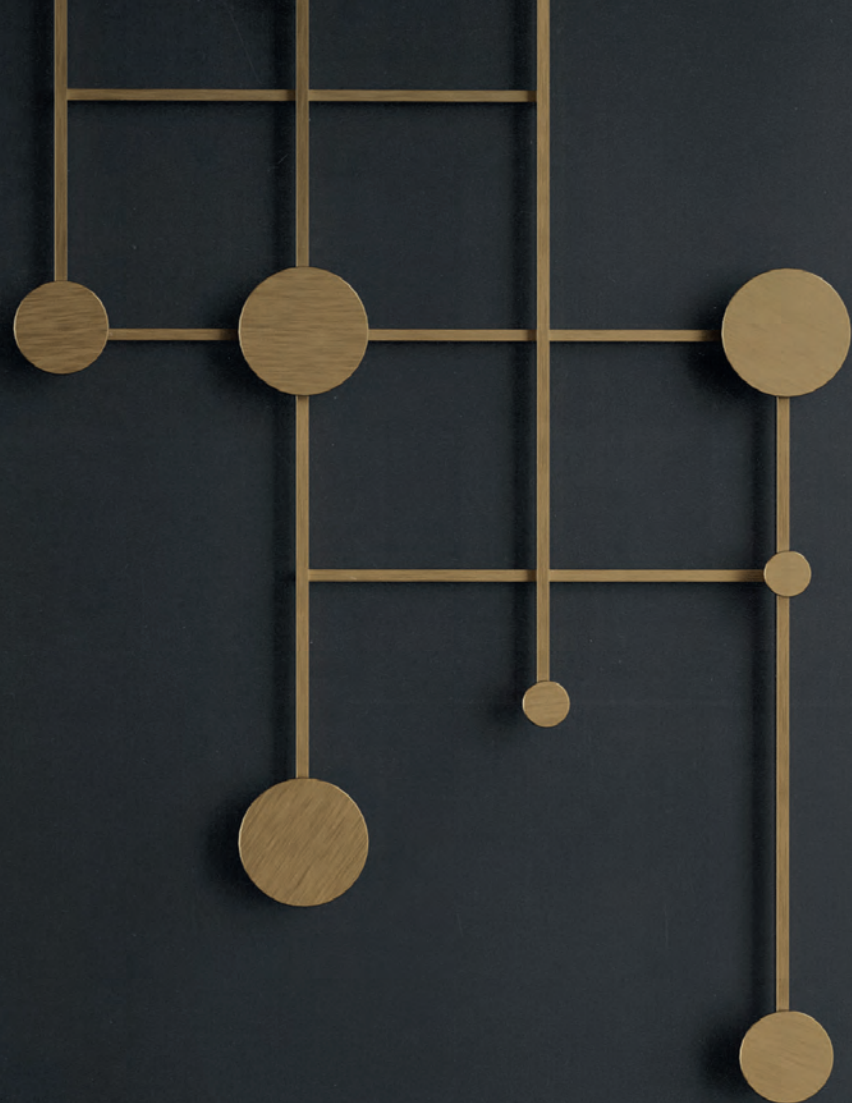
INGREDIENTS: POWDER-COATED STEEL IN BLACK / POWDER-COATED STEEL IN BORDEAUX / POWDER-COATED STEEL IN WHITE

Scintilla

Table Lamp
by Pietro Russo

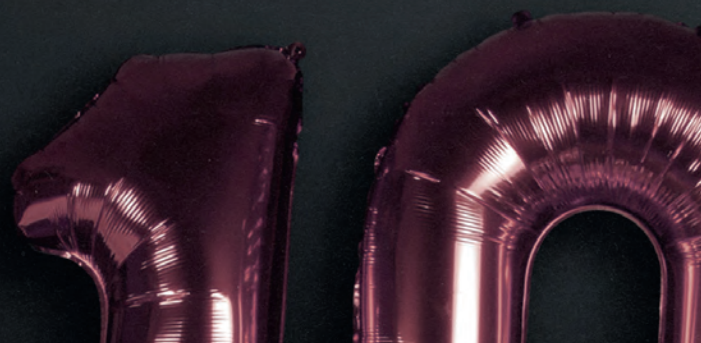


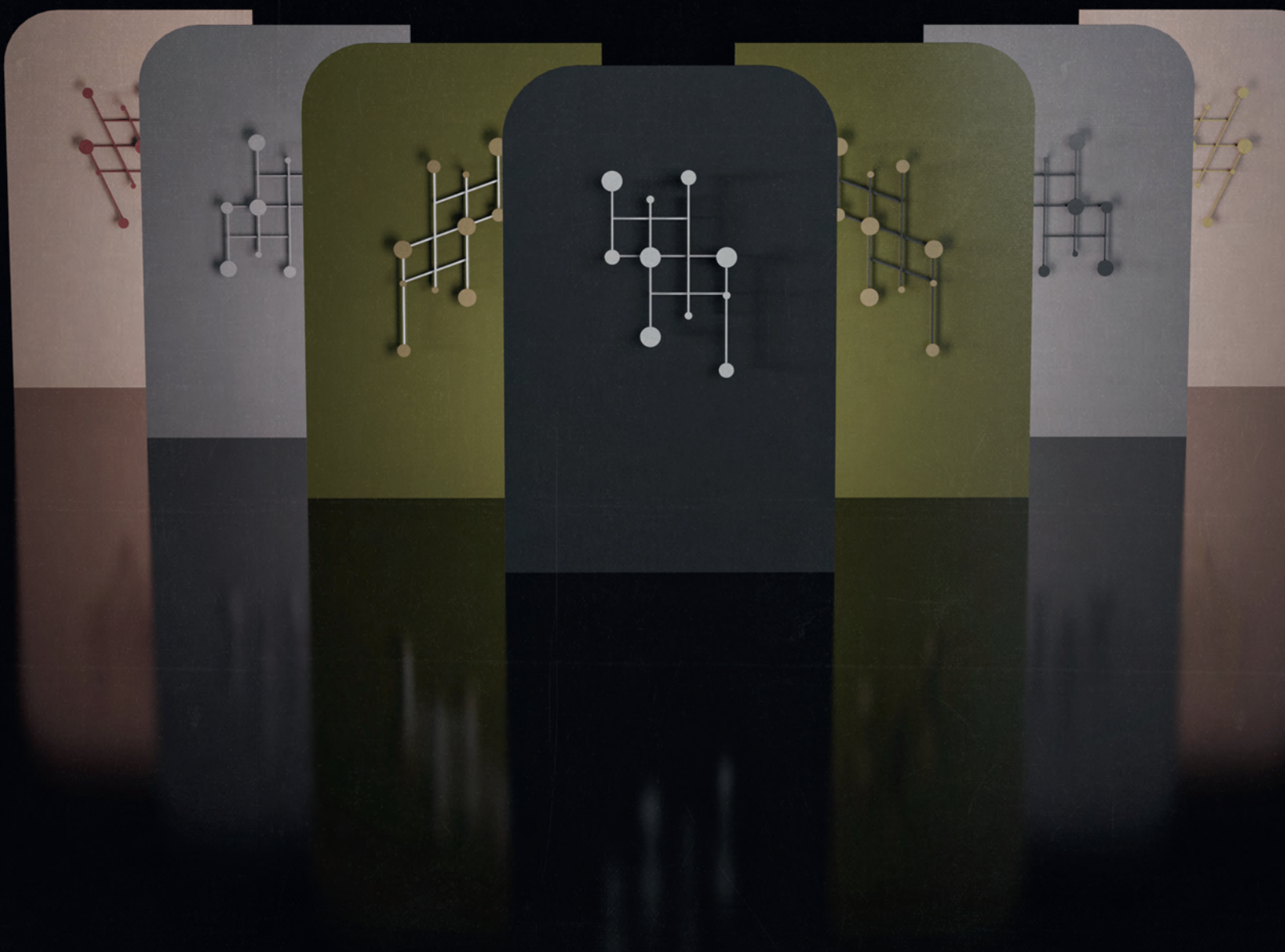
INGREDIENTS: SOLID BRASS, BOROSILICATE GLASS, LED



Memoir

Coat Rack
by Jakub Zak







INGREDIENTS: ANODIZED ALUMINUM IN BRASS / POWDER-COATED ALUMINUM IN WHITE / POWDER-COATED ALUMINUM IN BLACK / ANODIZED ALUMINUM IN BRONZE / ANODIZED ALUMINUM IN SILVER / POWDER-COATED ALUMINUM IN BORDEAUX

El Santo

Armchair
by Christophe de la Fontaine











INGREDIENTS: VEGAN FUR CURLY IN WHITE, VEGAN LEATHER IN WHITE, POWDER-COATED STEEL IN WHITE / VEGAN FUR CURLY IN CRÈME, VEGAN LEATHER IN CRÈME, POWDER-COATED STEEL IN WHITE / VEGAN FUR CURLY IN ROSE, VEGAN LEATHER IN ROSE, POWDER-COATED STEEL IN WHITE / VEGAN FUR CURLY IN GREY, VEGAN LEATHER IN GREY, POWDER COATED STEEL IN BLACK / VEGAN FUR CURLY IN GREEN, VEGAN LEATHER IN MINT, POWDER-COATED STEEL IN BLACK

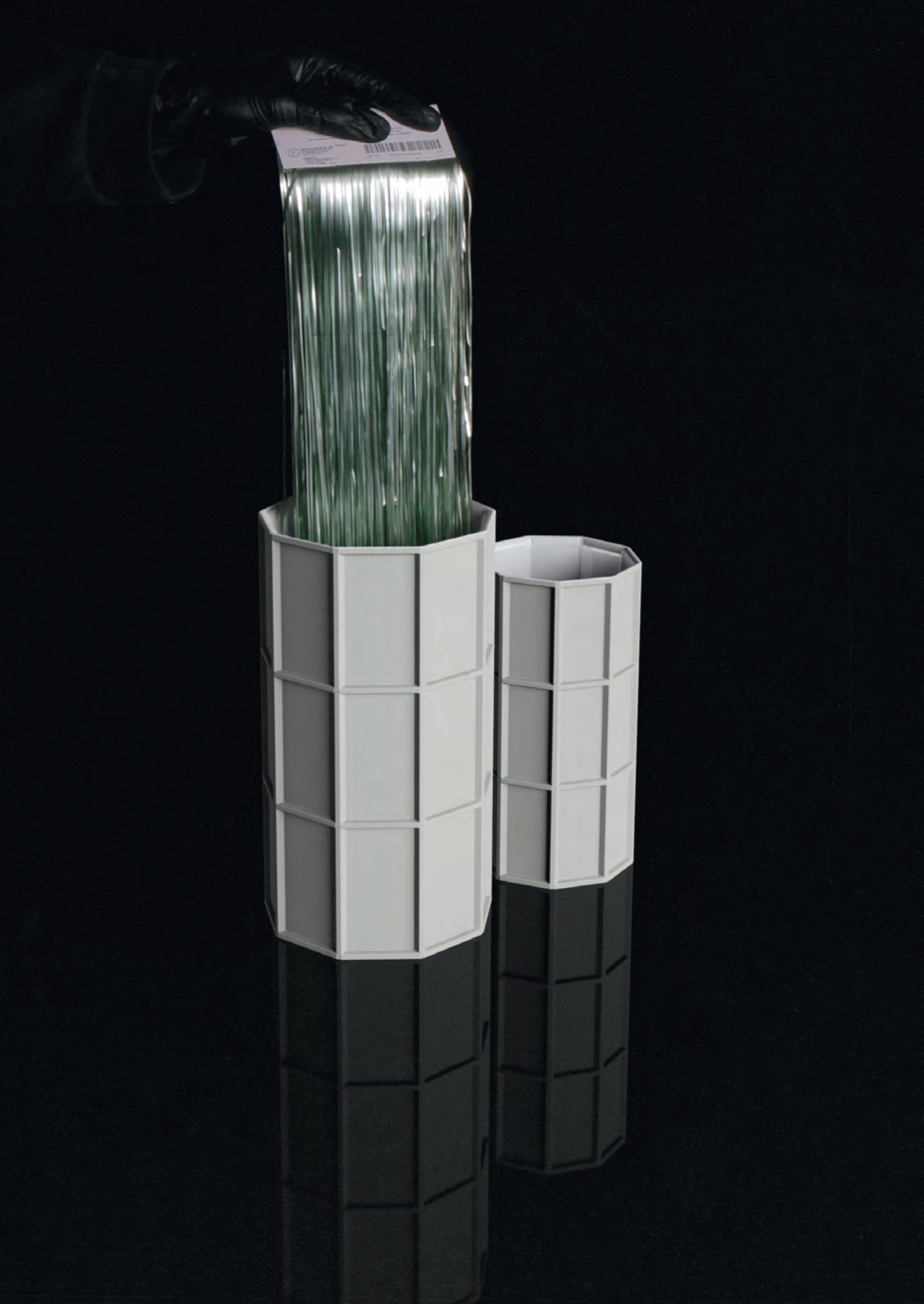


INGREDIENTS: VEGAN LEATHER IN WHITE, VEGAN FUR TEDDY IN WHITE, POWDER-COATED STEEL IN WHITE / VEGAN LEATHER IN GREY, VEGAN FUR TEDDY IN GREY, POWDER-COATED STEEL IN WHITE / VEGAN LEATHER IN ROSE, VEGAN FUR TEDDY IN ROSE, POWDER-COATED STEEL IN WHITE / VEGAN LEATHER IN CURRY, VEGAN FUR TEDDY IN CURRY, POWDER COATED STEEL IN BLACK / VEGAN LEATHER IN GREEN, VEGAN FUR TEDDY IN MOSS, POWDER-COATED STEEL IN BLACK



How to see Plants

Vase
by Christophe de la Fontaine



INGREDIENTS: PORCELAIN IN WHITE

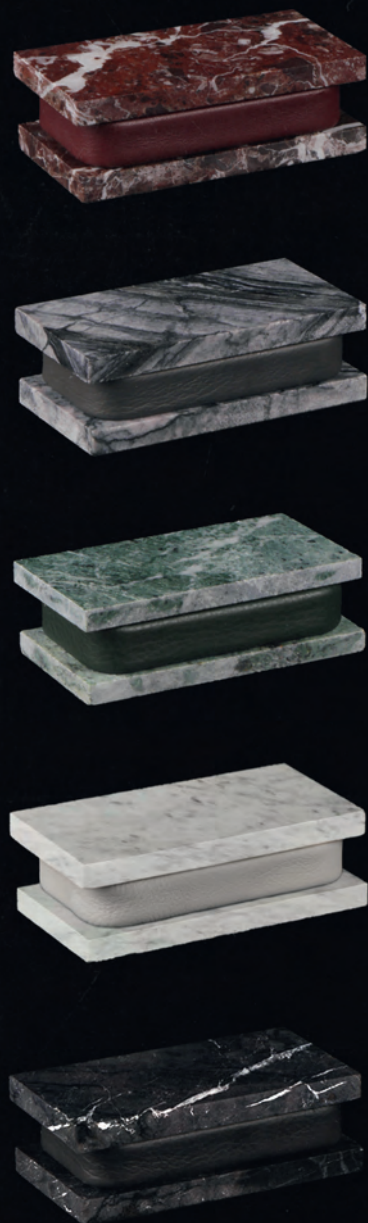
Bavaresk Table

Dining Table
by Christophe de la Fontaine









INGREDIENTS: MARBLE ROSSO LEVANTO, HPL, LEATHER IN BORDEAUX / MARBLE SILVERWAVE, HPL, LEATHER IN ANTHRAXITE / MARBLE VERDE ALPI, HPL, LEATHER IN DARK GREEN / MARBLE CARRARA, HPL, LEATHER IN WHITE / MARBLE NERO MARQUINA, HPL, LEATHER IN BLACK





Falstaff

Armchair
by Stefan Diez







INGREDIENTS: GLOSSY POWDER-COATED STEEL IN PEACH, LEATHER IN NUDE / GLOSSY POWDER-COATED STEEL IN SAGE, LEATHER IN SAGE / GLOSSY POWDER-COATED STEEL IN OYSTER, LEATHER IN CREME

INGREDIENTS: POWDER-COATED STEEL IN BLACK, LEATHER IN ANTHRACITE / POWDER-COATED STEEL IN BLACK, LEATHER IN BORDEAUX / POWDER-COATED STEEL IN BLACK, LEATHER IN OLIVE



Biscotto

Bench
by Christophe de la Fontaine





INGREDIENTS: NATURAL BEECH, SATINATED BRASS, LEATHER IN BISCUIT /
BEECH STAINED IN BLACK, BURNISHED BRASS, LEATHER IN ANTHRACITE /
BEECH STAINED IN FRAMBOISE, SATINATED BRASS, LEATHER IN BORDEAUX



Nightingale

Table Lamp
by Christophe de la Fontaine





INGREDIENTS: WHITE PORCELAIN, LEATHER IN BISCUIT / WHITE PORCELAIN, LEATHER IN COFFEE / WHITE PORCELAIN, LEATHER IN BORDEAUX

Imprint

Art Direction/Layout/Photography/Chef Pâtissier:

Aylin Langreuter

Words:

Lea Schmidbauer

Createur/Postproduction/Sous Chef:

Calvin Middel

**Dante - Goods and Bads GmbH
Schloss Hagg 24
94362 Neukirchen, Germany
www.dante.lu
info@dante.lu**

**facebook.com/goods.and.bads.dante
instagram.com/dantegoodsandbads
by © Dante-Goods And Bads 2022**